

vtech



VTech (Dongguan) Communications Limited

VTech Metal Shop



Background & Locations

- Founded in 1976; Headquartered in Hong Kong
- Public listed in Hong Kong (HKSE:303)
- Manufacturing sites in Houjie, Liaobu, Qingyuan and Malaysia; R&D Center in Shenzhen
- Operations in 11 countries



Work Force

- 27,100 employees worldwide
- 1,500 R&D professionals & engineering staffs



Business & Financials

- 3 Divisions: Phones, Electronic Learning Products & Contract Manufacturing Services
- Financially strong with revenue of US\$2,162M in FY19
- Reputable for high Quality



HouJie since 1985



LiaoBu since 1997



Xixi since 2017



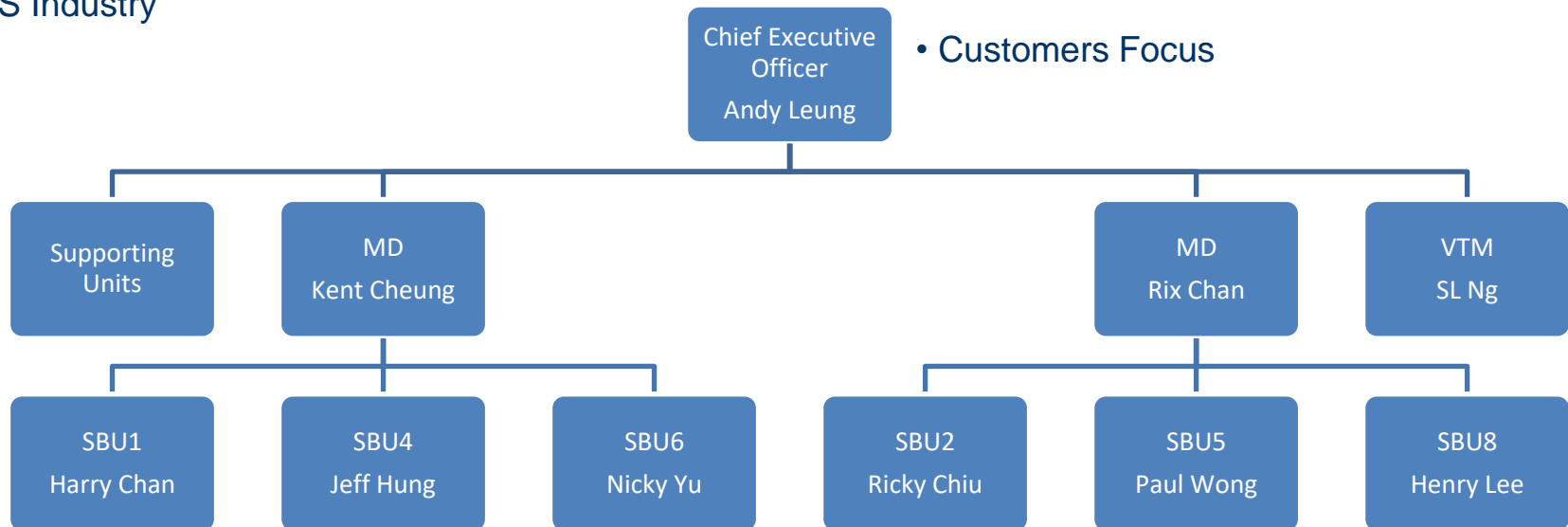
Shenzhen since 2008

Mission

- Be the preferred business partner of selected customer segments in the EMS Industry

Strategy

- Organic Growth with Selective Acquisition
- China Plus One
- Customers Focus



Core Competencies

- Stable middle to senior level staffs with good knowledge in EMS business and skill in serving customer well.

Competitive Edges

- Niche in manufacturing professional audio products
- Strong financial backup by the Group
- Right operations size to serve selected customer segments



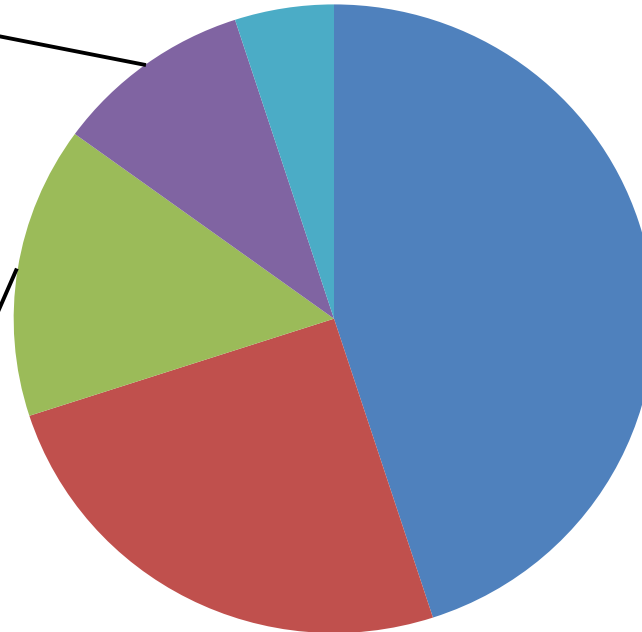
FY2019A Sales by Product Type



Power
System Unit
10%



Lock 15%



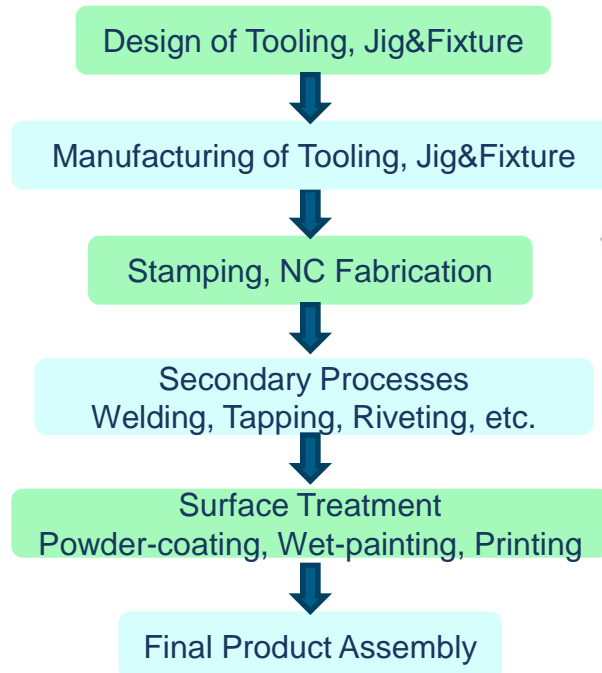
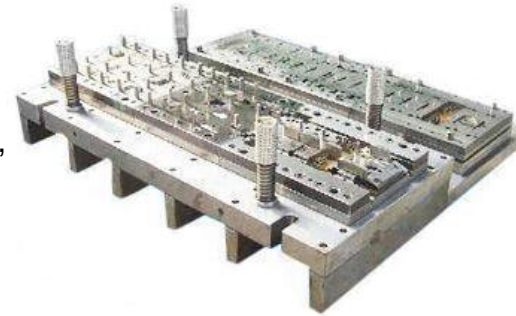
Professional
Audio 45%

Office
Automation
Equipment
25%



Introduction of VTech Metal Shop

- formerly known as Kenny Precision Products, a world-class supplier with solid reputation and 40 years experience in the industry, which integrated into VTech in Yr2017.
- new facilities were established in Liaobu, Dongguan Province, China and have commenced operations..
- provides customers with one-stop service for sheet metal and assembly productions.



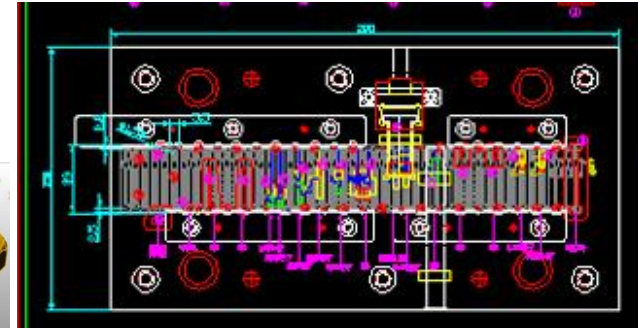
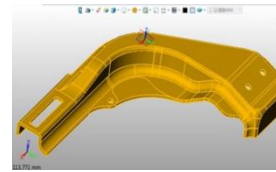
VTech Metal Shop

Our Manufacturing Capabilities

CMS at vtech
Green, Flexible and Customisable

Tooling Design and Manufacturing

- in-house tooling design and manufacturing ensure effective control and monitoring on quality, cost and schedule.
- advanced computer design softwares are used for tooling and product design, AutoCAD, Pro-E, Solidwork
- machining works and assembly are completed by our high precision facilities.



Facility	Specification	Qty	Manufacturer
CNC Wire-cut	Max. Work Piece Size: 650 x 700 mm	9	Charmilles (Switzerland) Sodick (Japan) Seibu (Japan) (China)
Vertical Machining Centre	Travel XYZ: 1300 x 750 x 600 mm	5	Leadwell (Taiwan) Hartford (Taiwan)
Milling Machine	Travel XY: 500 x 1000 mm	6	Topwell (Taiwan)
Grinding Machine	Max. Work Piece Size: 630 x 1000 mm	13	Proth (Taiwan) Okamoto (Japan)



VTech Metal Shop

Our Manufacturing Capabilities

CMS at vtech
Green, Flexible and Customisable

Stamping Production

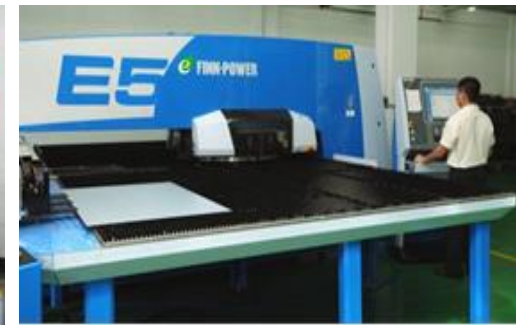
- more than 100 presses with tonnages 60~650 can deliver small to large-medium sized parts.
- 40sets of robotic arms in stamping lines provide high efficient and consistent quality production

Facility	Specification	Qty	Manufacturer
Progressive	60~300 ton	17	Seyi / Feng Yu (Taiwan)
Single-hit	60~200 ton	81	Seyi / Feng Yu (Taiwan)
Hydraulic	200-650T	3	Han Qiao (China)



NC Fabrication Production

- high precision NC machines eliminate tooling needs for orders of small-quantity, high mix low volume and prototyping.
- are capable of processing sheet metal of up to maximum dimension of 2500 x 1400 mm



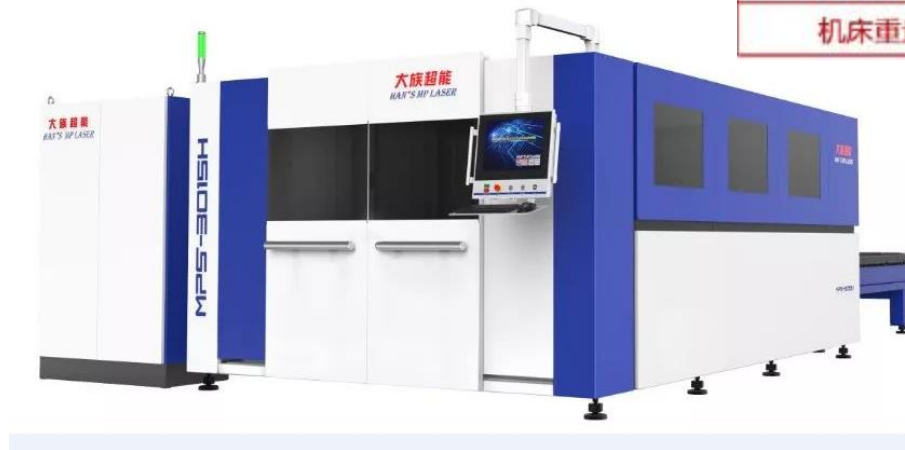
Facility	Specification	Qty	Manufacturer
NC Punching	Max. Sheet Size: 2500 x 1400 mm Max. Sheet Thickness: 3mm	4	Finn Power (Finland)
NC Bending	Max. Bending Length: 2400mm	4	Amada (Japan) Toyokoki (Japan)



Laser Cutting

- 1 set laser cutting in purchasing and schedule to start running in Dec.
- Applications
 - 0.5-20mm steel
 - 0.5-8mm stainless steel
 - 0.5-5.0mm aluminium

技术参数	MPS-3015C/4015C
加工幅面	3000×1500 (4000x1500) mm
X、Y轴定位精度	±0.05mm/m
X、Y轴重复定位精度	0.03mm
最大运行速度	120m/min
最大运行加速度	1.2G
工作台最大载重	800kg/1000kg
机床重量约	6.5T/7.0T



Facility	Specification	Qty	Manufacturer
Laser Cutting	Max. Sheet Size: 2500 x 1400 mm	1	Man's MP Laser



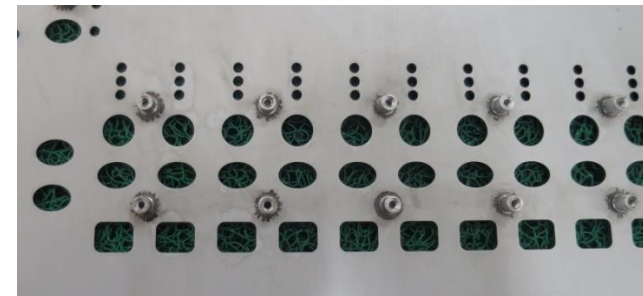
Welding Process

- CNC facilities offer high precision in positioning welding process.
- our stud welding and laser welding are widely used in tight cosmetic requirement product.

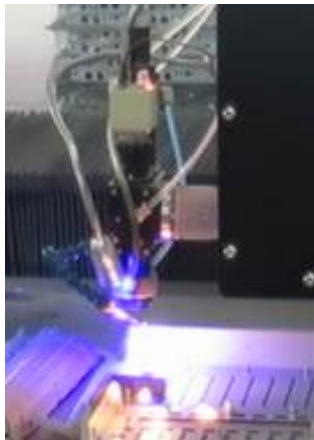
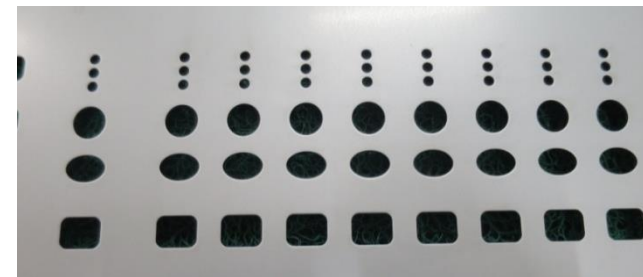
Facility	Specification	Qty	Manufacturer
Stud Welding	Stud Size M3 ~ M10 XY Travel: 1050 x 1550 mm	3	HBS (Germany), Soyer (Germany)
Laser Welding	Max. Work Piece Thickness: 2.0mm XY Travel : 800 x 2400 mm	2	(China)
Spot Welding	Manuel	15	(China)



Stud Welding
No mark on another (front) side after studs firmly welded (bottom side)



bottom side
front side



Laser Welding
No mark on another side after 2 parts firmly welded



Painting, Coating and Printing Processes

- in-house wet painting, powder coating and printing ensure good quality control on cosmetic requirement of final product.
- our automated painting and coating lines are capable of processing part in max. size 2000 x 800 mm
- our facilities conform to environment protection regulations of Chinese government.

Facility	Specification	Qty
Automated Powder Coating Line	Max. Workpiece size: 2000 x 800 mm Equivalent to clean-room Class 80k	1
Automated Wet Painting Line	Max. Workpiece size: 2000 x 800 mm Equivalent to clean-room Class 80k	1
Printing Room	Max. Printing Unit: 35 Equivalent to clean-room Class 80k	1



Automated
Painting/Coating Lines



Powder Coating Line



Automatic Silkscreen
Printing Machine



Silkscreen Printing
Workshop

VTech Metal Shop

Our Quality Management System

CMS at vtech
Green, Flexible and Customisable

Quality Assurance

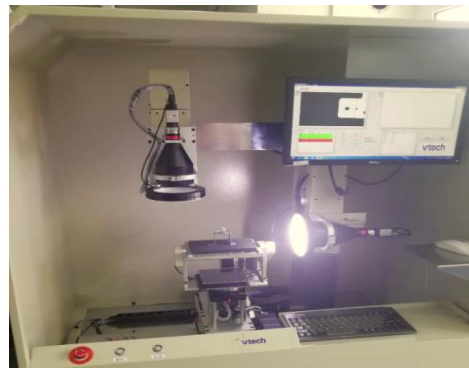
- Certified ISO9001:2015 in 2017.
- Certified ISO14001:2015 in 2018.
- From sourcing raw materials to production of final products, we strive for superior quality and best value for our customers.
- Functional and dimensional inspection equipment are able to perform most requirement of tests on product.



2XCMM



RoHS Tester



Automatic Optic Inspection



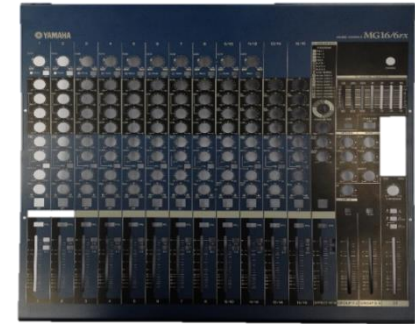
Fischerscope X-ray System



ISO9001 & ISO14001 Certificate

Professional Audio

- world class customer base
- strict requirement on both cosmetic and dimension.
- most of them are of high mix low volume order type.



Speaker Grilles

- for both professional and consumable audio market.
- we have in-house workshop to mask speaker mesh.



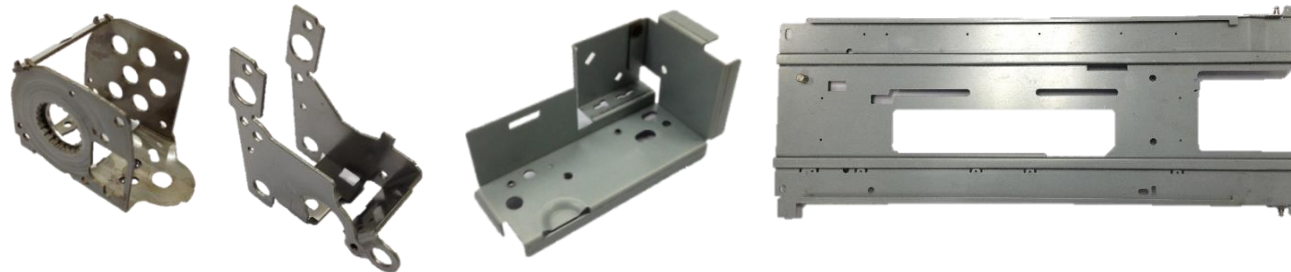
Office Automation Equipment

- spring plate and contact plate in feeding and laser drum modules.
- thin in material thickness (0.2~0.5mm, stainless steel/copper brass) and very high precision in dimension



Office Automation Equipment

- brackets and supports in moving mechanism of copy/printing machines.
- complex in shape and tightly-toleranced parts.

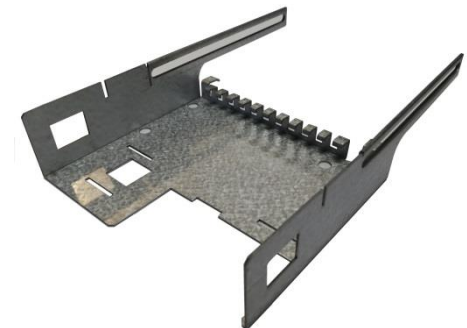
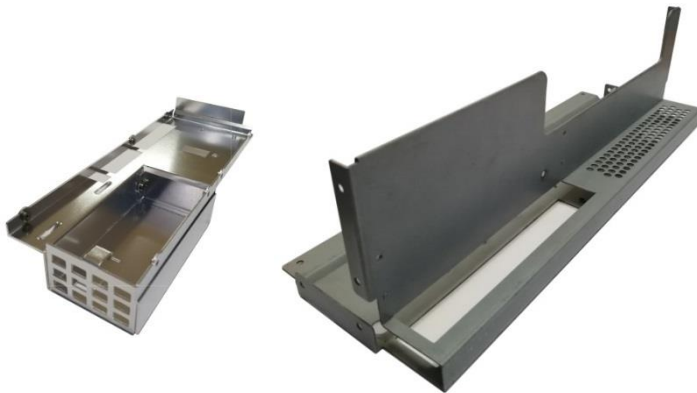


Lock

- for hotel door lock
- Automation in well designed process to guarantee high efficiency
- High quality for appearance and liability of withstanding 300H salt spray test.

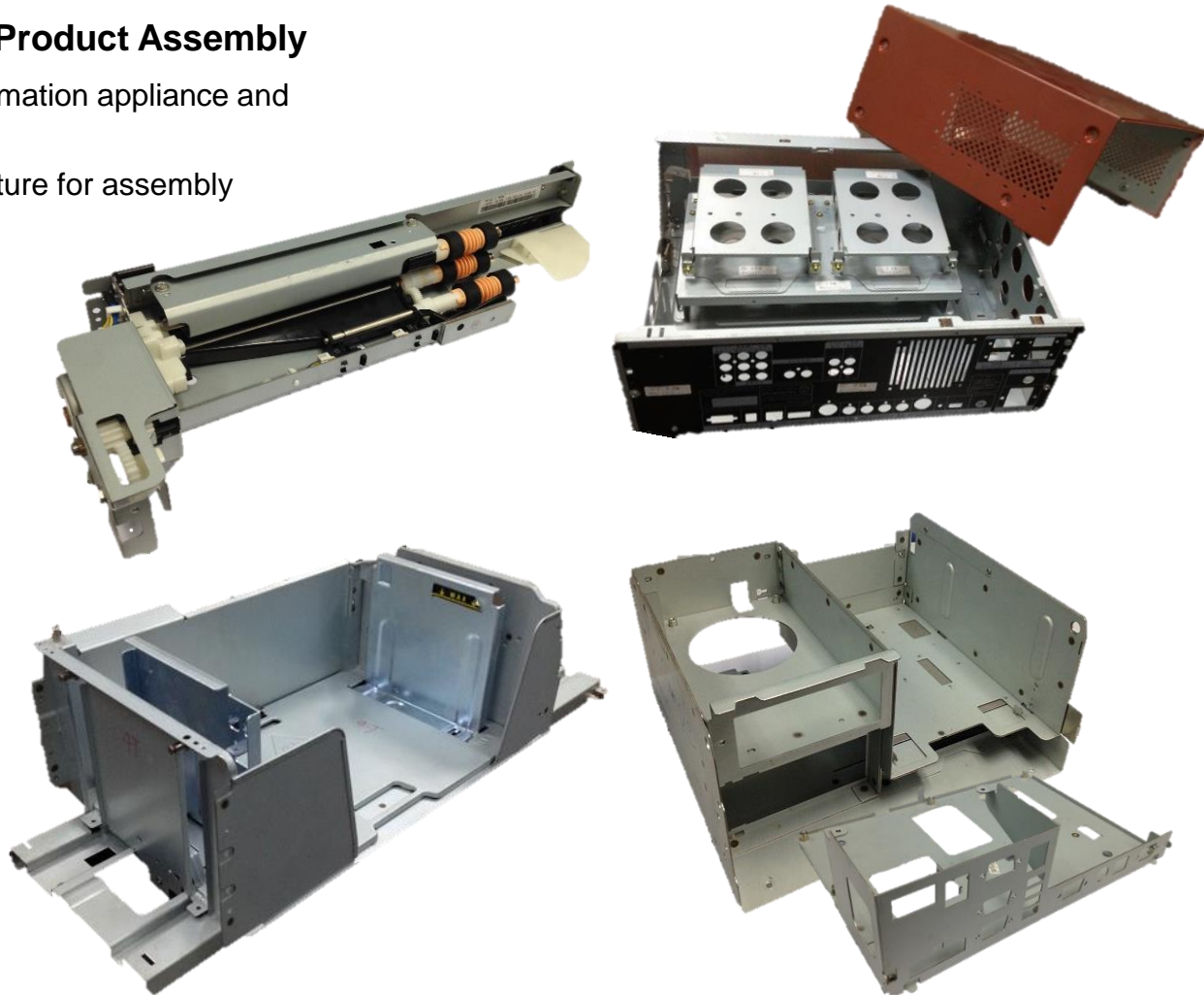


More Work Examples...



Mechanical / Electro-mechanical Product Assembly

- Japanese customer base in office automation appliance and financial equipment industries.
- we are able to design and make jig&fixture for assembly processes of welding, fastening, etc..



That's all ...

CMS at vtech
Green, Flexible and Customisable



Thank you

Doing Business with VTech